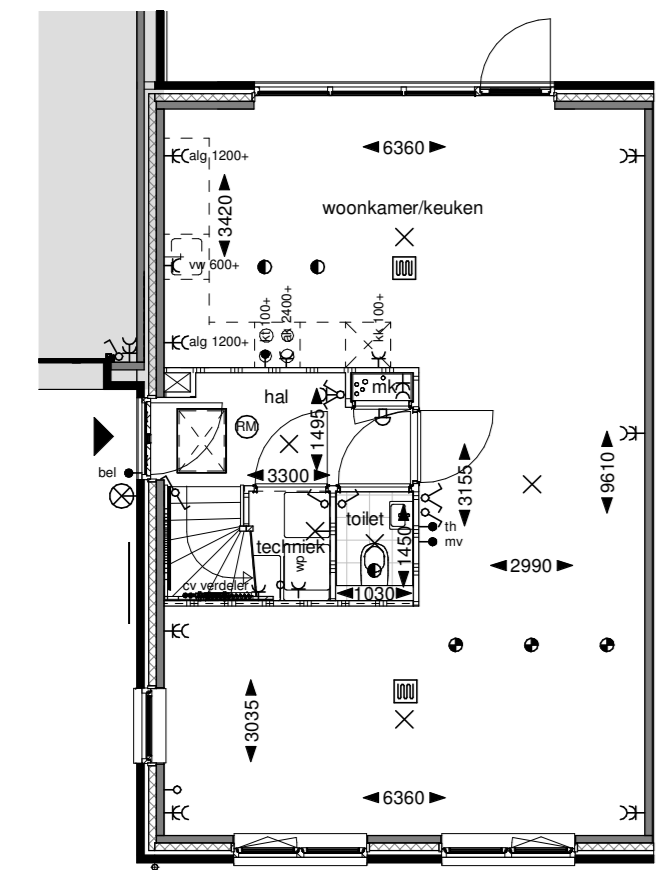


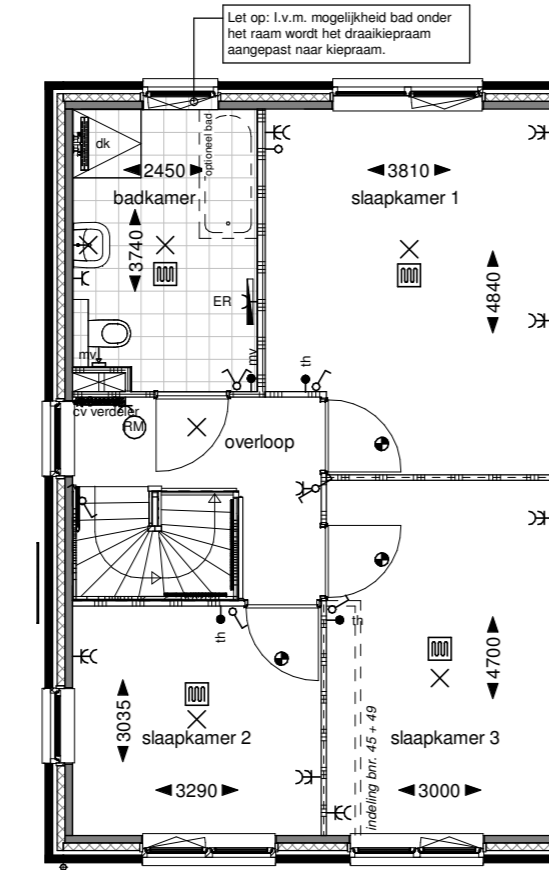
602: Keuken achter



Begane grond

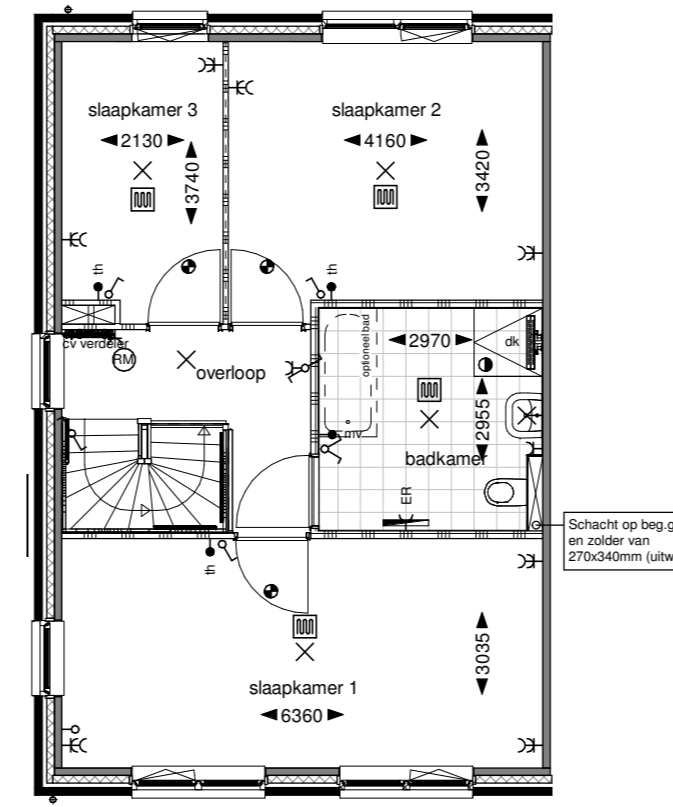
Deze optie kan worden gecombineerd met de optie:
 - 415: Grote woonruimte in berging
 Hierbij moeten de elektrische en funderingsindeling op elkaar worden afgestemd
 De optie kan niet gecombineerd worden met de opties:
 - Looptouw naar berging in B
 - Looptouw naar berging en vergrote hal (414)

701: Badkamer vergroten



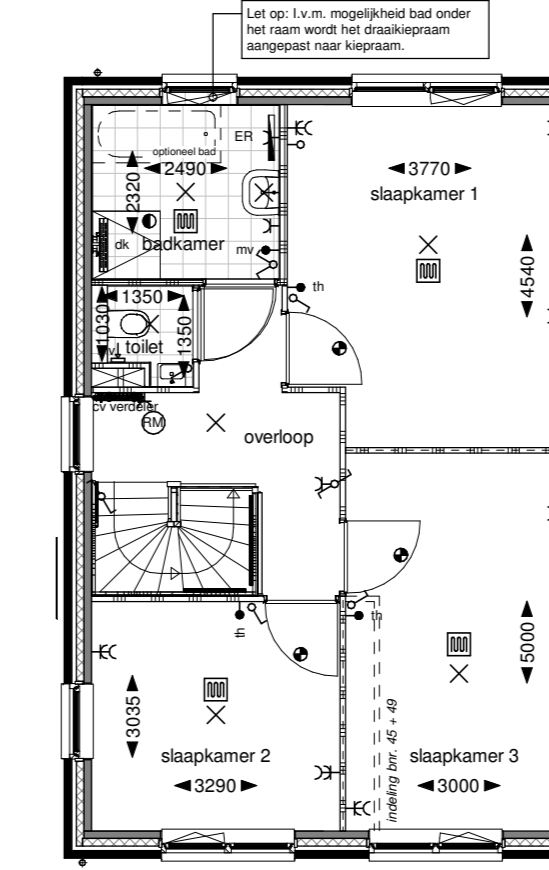
Eerste verdieping

702: Badkamer midden



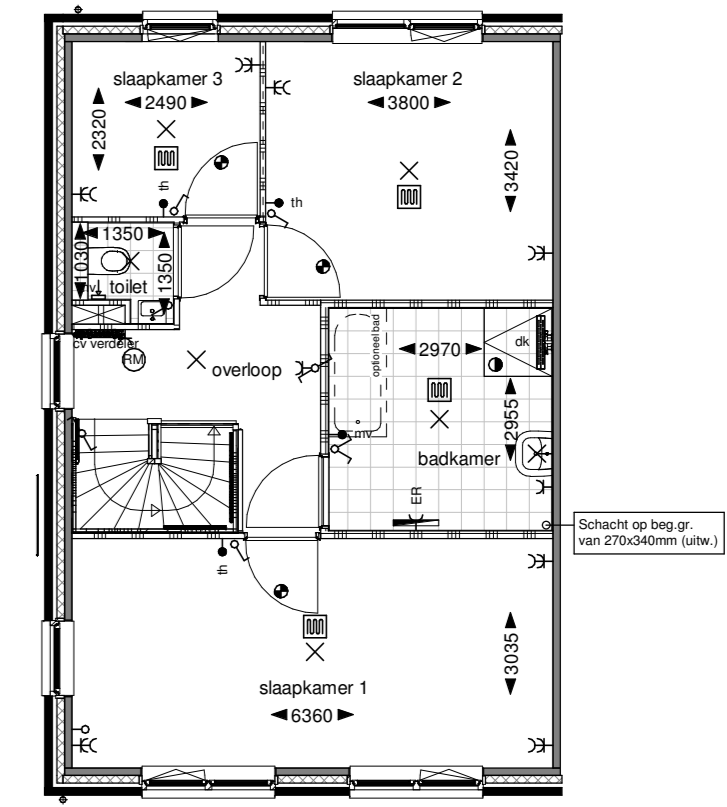
Eerste verdieping

703: Badkamer vergroten + separaat toilet



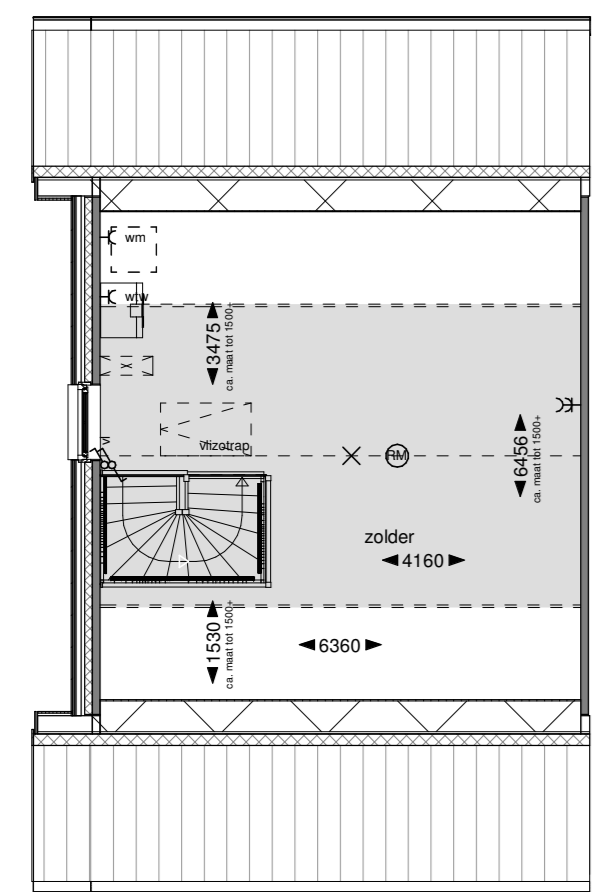
Eerste verdieping

704: Badkamer midden & separaat toilet

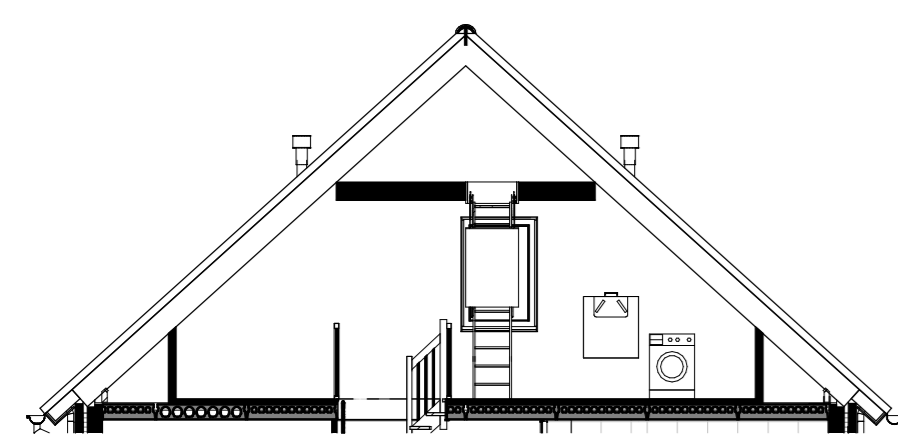


Eerste verdieping

801: Vliering langskap

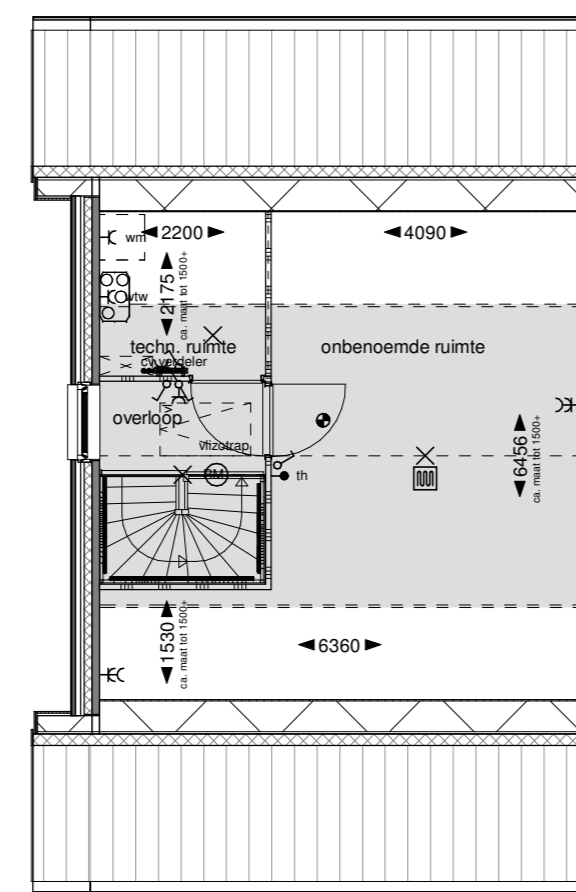


Tweede verdieping

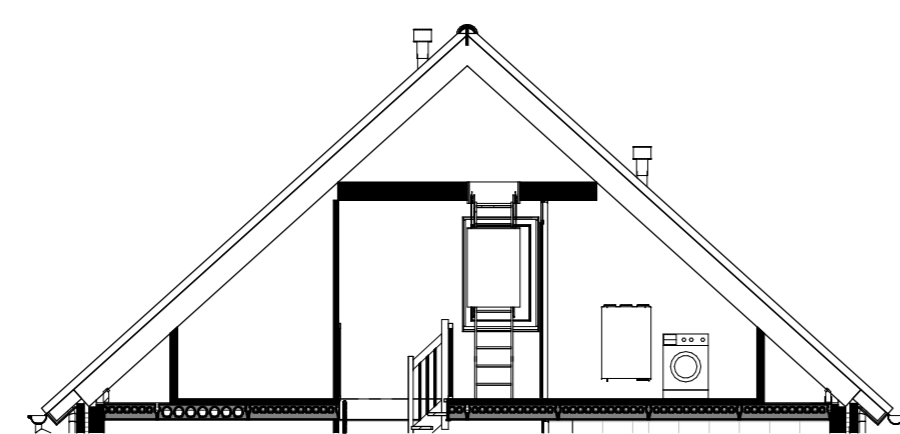


Doorsnede

811: Zolderindeling 1 langskap

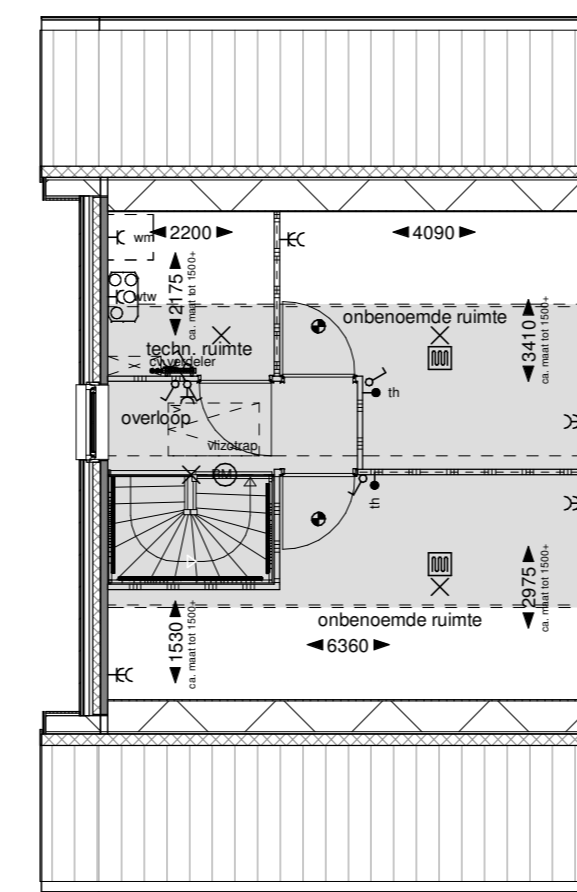


Tweede verdieping

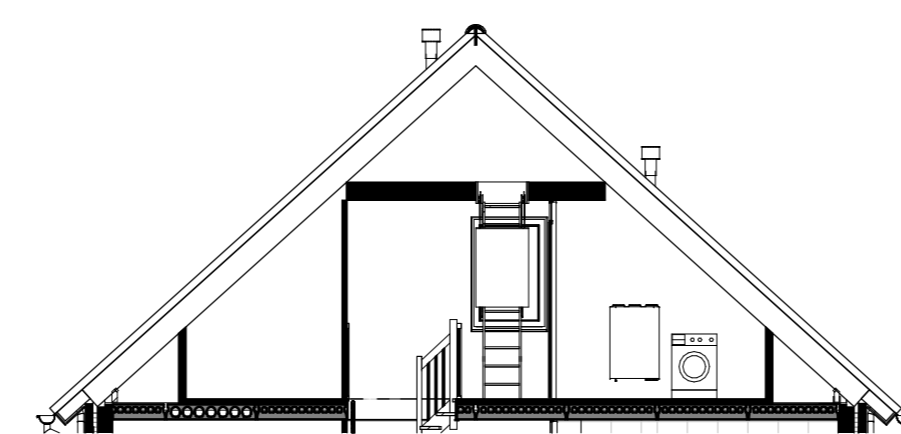


Doorsnede

821: Zolderindeling 2 langskap

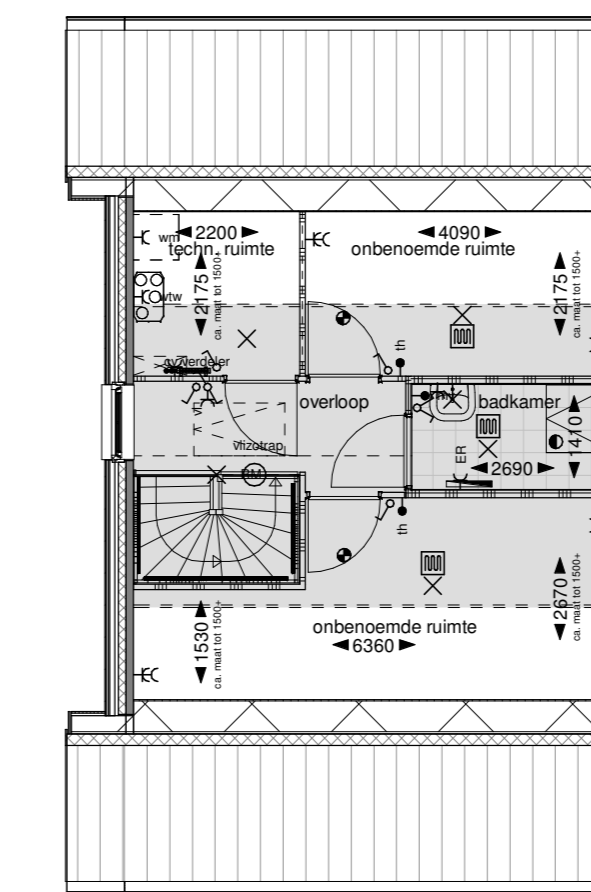


Tweede verdieping

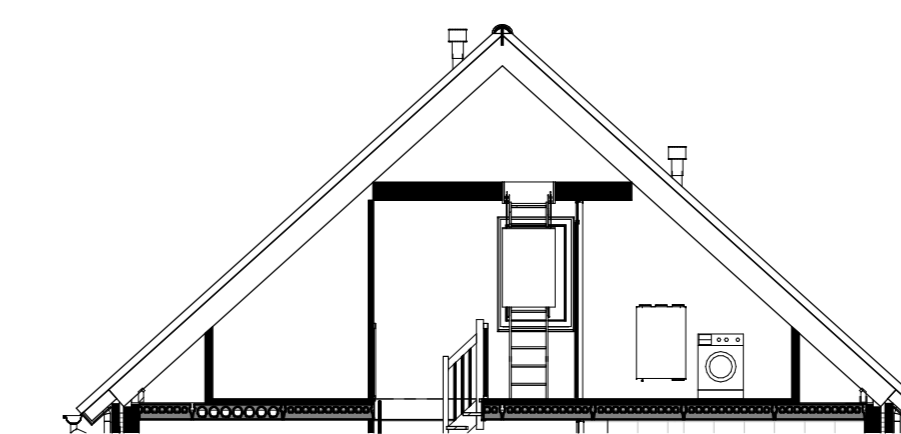


Doorsnede

831: Zolderindeling 3 langskap

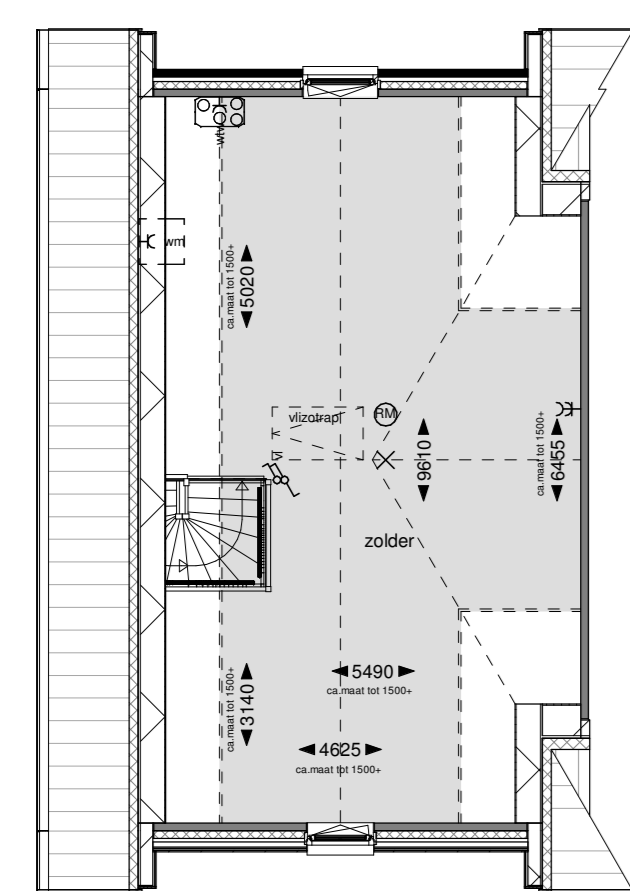


Tweede verdieping

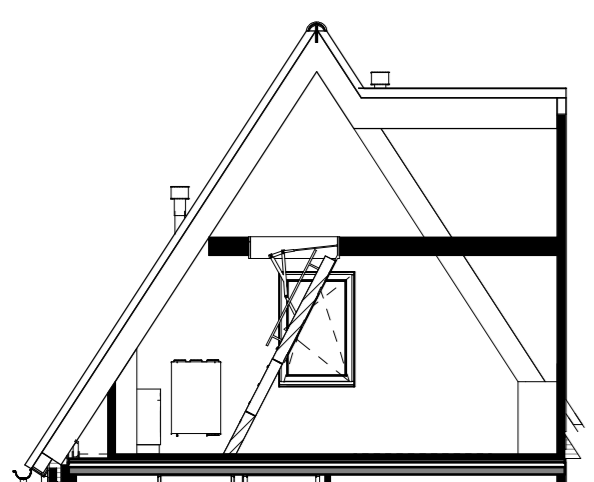


Doorsnede

803: Vliering dwarskap hoek

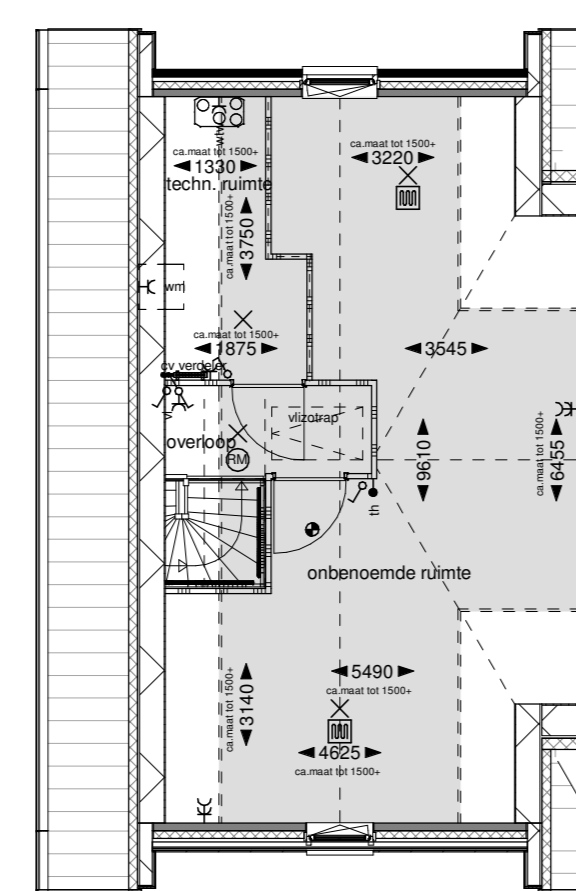


Tweede verdieping

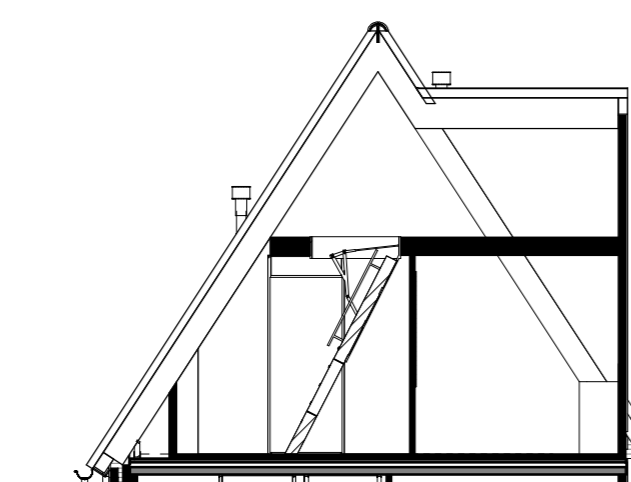


Doorsnede

813: Zolderindeling 1 dwarskap hoek

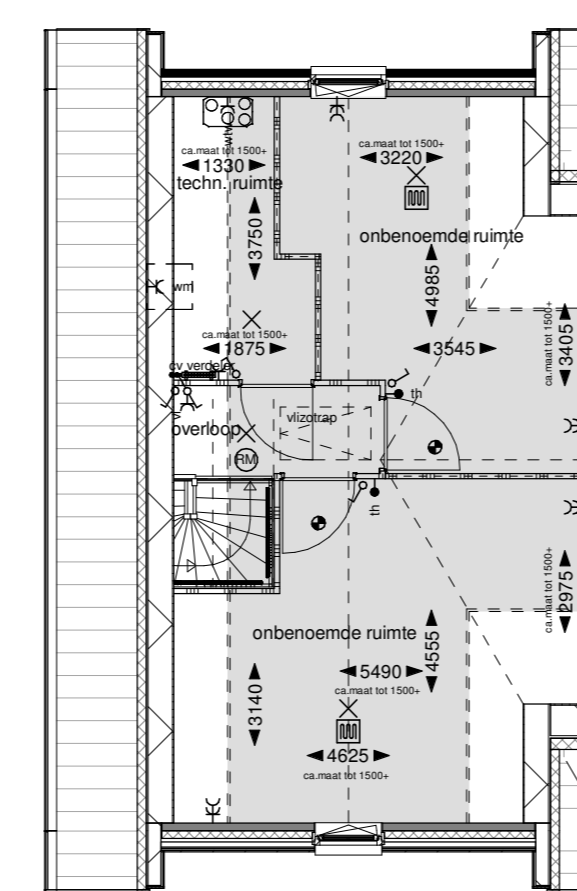


Tweede verdieping

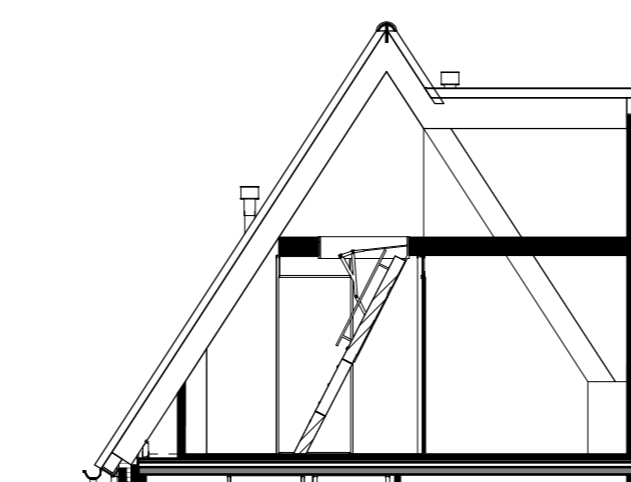


Doorsnede

823: Zolderindeling 2 dwarskap hoek

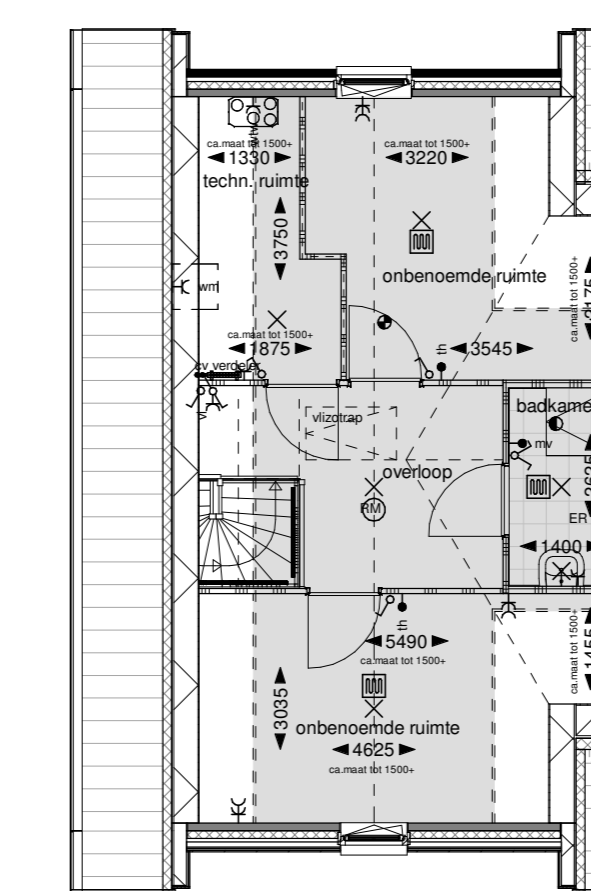


Tweede verdieping

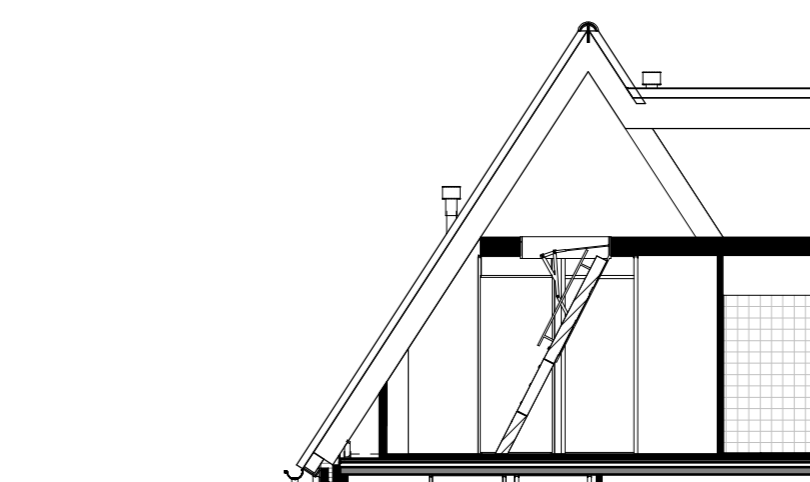


Doorsnede

833: Zolderindeling 3 dwarskap hoek



Tweede verdieping



Doorsnede

optie mogelijk bij bouwnummer:	bouwnummer									
	4	5	45	46	47	48	49	50		
602										
701										
702										
703										
704										
801										
811										
821										
831										
803										
813										
823										
833										